

# ETHERNET SERVICES: E-LINE

## SCALABLE, FLEXIBLE LAYER 2 NETWORK

### A Network You Can Rely On

The demands on your network are intense. Online and enterprise applications stretch network bandwidth to the edge, demanding performance like never before. Sophisticated users, on site and mobile, require reliable, around-the-clock data and high-bandwidth application access—across your private network and into the cloud. Stability, security and network efficiency are no longer just the ideal—they are prerequisites for enterprise business success in an increasingly competitive, and dynamic, global marketplace.

What is the solution for meeting the burgeoning demands of the enterprise network? Electric Lightwave's Ethernet Services empowers your business with a robust and cost-effective solution for achieving the reality of exceptional network manageability and efficiency and building the scalable, flexible, secure Layer 2 network you need.

### Why Electric Lightwave's Carrier Ethernet Service

- **More scalability** for growing your network bandwidth as business demands it, in minimal bandwidth increments, from 1.5 Mbps and up, when you add additional ports.
- **More predictability** through customer-controllable bandwidth settings help you manage monthly expenses, cutting bandwidth and equipment costs and ensuring faster deployments.
- **More reliability** improves service quality for better end-to-end network performance, reducing downtime and boosting availability.

### BUSINESS BENEFITS

#### + Reliable and Secure Performance

Electric Lightwave's Ethernet Services are provisioned over our own fiber backbone and IP/MPLS core with SLAs that guarantee the highest reliability standards.

#### + Optimal Network Design

With Quality of Service (QoS) technology, you can prioritize your Metro or Wide Area Network traffic into queues to maximize the efficiency of your network.

#### + Certified by Metro Ethernet Forum (MEF)

We deliver scalable, reliable business-class Ethernet that performs according to rigid service level specifications and strict industry standards as defined by MEF.

## Make the Most of Your Bandwidth

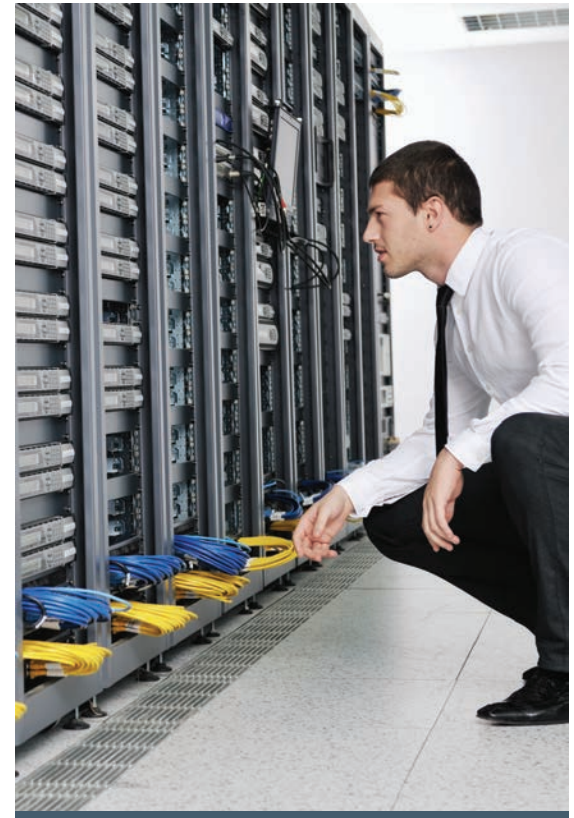
Electric Lightwave's Ethernet Services offer a flexible network topology that grows with your business.

- **Ethernet Private Line (EPL) Point-to-Point Service** replaces your traditional private line service and provides dedicated bandwidth between two points, supporting a single Ethernet Virtual Connection (EVC) per User Network Interface (UNI) and offering more bandwidth at a lower cost when compared to a traditional TDM private line.
- **Ethernet Virtual Private Line (EVPL) Point-to-Multipoint Service** supports multiple Ethernet Virtual Connections (EVCs) per User Network Interface (UNI) by assigning different bandwidths to different EVCs for maximum flexibility. Featuring easy and cost-effective upgrades, this service avoids over subscription of Committed Information Rate (CIR) bandwidth.

## Delivery Standards You Can Trust

Ensure that your service meets your network's needs by choosing Electric Lightwave as your trusted Ethernet provider. Electric Lightwave's Ethernet Services provide you with a range of benefits:

- **A single trusted vendor** gives you true convenience and customized solutions, with Service Level Agreements (SLAs) that guarantee the highest reliability standards.
- **Class of Service (CoS) technology** supporting critical business applications such as voice and video while seamlessly prioritizing traffic and maximizing underused bandwidth.
- **Simplified network management** enables rapid fault detection and monitoring.
- **Network visibility and performance monitoring tools** track your network's health and performance around the clock.
- **MEF 9 and 14 certification** means your service meets the highest Carrier Ethernet standards in the industry.
- **High performance Layer 2 Wide Area Network (WAN) configurations** provide site-to-site access, server and data center consolidation, video conferencing and disaster recovery, ensuring business continuity.
- **A variety of access types** provide broad availability from Ethernet over fiber, Ethernet over Copper, and Ethernet over TDM.
- **Flexible high bandwidth** enables dedicated high speed Internet access, video streaming, data replication and other business continuity applications requiring high amounts of bandwidth.
- **Security** means that Ethernet traffic is separated from other customer Internet traffic using Electric Lightwave's private fiber-based backbone and state-of-the-art Layer 2 switching technologies.



**CONTACT US** ▶ 888.889.8088

### ABOUT ELECTRIC LIGHTWAVE™

Electric Lightwave™ serves as a trusted network infrastructure partner to enterprises of all sizes, government agencies and carriers throughout the western United States. The company combines dense metro and intercity fiber assets, enterprise-grade network solutions, including Ethernet, Wavelengths and IP, with a highly responsive and easy to do business with approach. Electric Lightwave offers a premium service experience to match its premium network infrastructure solutions.

EL-02-13:07/27/16