

ETHERNET SERVICES

E-LINE SERVICES

ATTRIBUTE

Network Architecture	Switched or Dedicated	
UNI Port Speeds	10Mb/100Mb/1Gb/10Gb	
Mode	Full Duplex/Auto-Negotiation	
CIR Availability		
Minimum CIR	10% EVC	
Maximum CIR	100% EVC* (see note below)	
Class of Service (CoS)	4	
Network Configuration	EPL (Pt-to-Pt)	EVPL (Pt-to-MultiPt)
All-To-One Bundling	Yes	No
Service Multiplexing	No	Yes
Standard EVC Allowance	1	60
One Way Latency		
0–24 miles	5ms	
25–99 miles	6ms	
100–249 miles	7ms	
250–500 miles	11ms	
501–999 miles	15ms	
1,000–2,499 miles	27ms	
Jitter	2ms	
MEF 9 + 14 Certification	Yes	
Last Mile Access Type	EoS or EoF - 5Mb to 10Gb EoC - 5Mb to 60Mb On-Net EoTDM - 1.5Mb to 12Mb	
Jumbo Frame Support	Integra Fiber: MTU up to 9000 bytes EoC, EoTDM: MTU up to 1600 bytes	

SLA

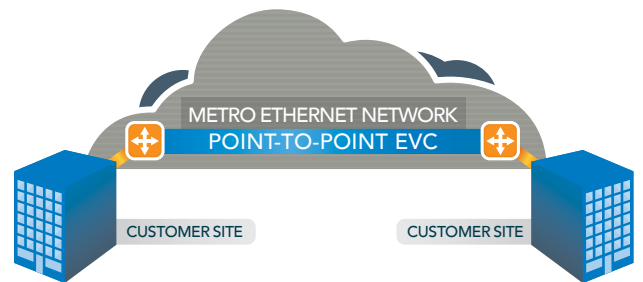
Network Availability	99.99%
Frame Throughput	99.9%, 99.99%**
MTTR	4 Hours

* 80% EVC for EVCs ≥ 800Mb
** Real-Time CoS

EL-02-23:3/10/15

Ethernet Private Line (EPL)

Ethernet Private Line is a Point-to-Point service. It consists of two user network interfaces (UNIs) with one EVC provisioned between them.



Ethernet Virtual Private Line (EVPL)

Ethernet Virtual Private Line is a Point-to-Multipoint service. It consists of two or more user network interfaces (UNIs) with multiple EVCs between them (service multiplexing).

